

AYLEEN, 16 YEARS MISDIAGNOSED SKIN CONDITION

CLINICAL CONTEXT

- Since infancy: **atopic dermatitis**
- Since age 13: **blemished, itchy skin with pustules**, particularly in seborrheic areas (head, neck)
- Multiple failed treatments: topical creams, washing solutions, high-dose vitamin C
- **Diagnosed with hormonal acne** by dermatologist, but **no improvement**

Multiple
sessions,
wrong
assumption



MacroArray Diagnostics
Lemböckgasse 59, Top 4
1230 Vienna, Austria

+43 (1) 865 25 73

office@madx.com

www.madx.com

MAD X
MACRO ARRAY DIAGNOSTICS

madx.com

ALEX X
ALLERGY XPLOER

ALLERGY XPLOER CASE STUDY

HOW USING ALEX³ LED TO A BETTER THERAPY FOR AYLEEN



AYLEEN, 16 YEARS MISDIAGNOSED SKIN CONDITION

EXCERPT FROM AYLEEN'S MULTIPLEX TEST RESULTS

Total IgE result: 423 kU/L Reference range total IgE Adults < 100 kU/L

Allergen Source	Allergen	Biochemical Designation	IgE Level [kU _A /L] with CCD blockade
Malassezia sympodialis	Mala s 5	Unknown	36.93
Malassezia sympodialis	Mala s 6	Cyclophilin	4.61
Malassezia sympodialis	Mala s 11	Mn Superoxid-Dismutase	35.00
Malassezia sympodialis	Mala s 13	Thioredoxin	<0.3
Aspergillus fumigatus	Asp f 6	Mn Superoxid-Dismutase	18.73

For convenience, extract results are not shown if a corresponding component was positive.



HOW ALEX³ CHANGED THE THERAPY FOR AYLEEN

MOLECULAR ALLERGENS

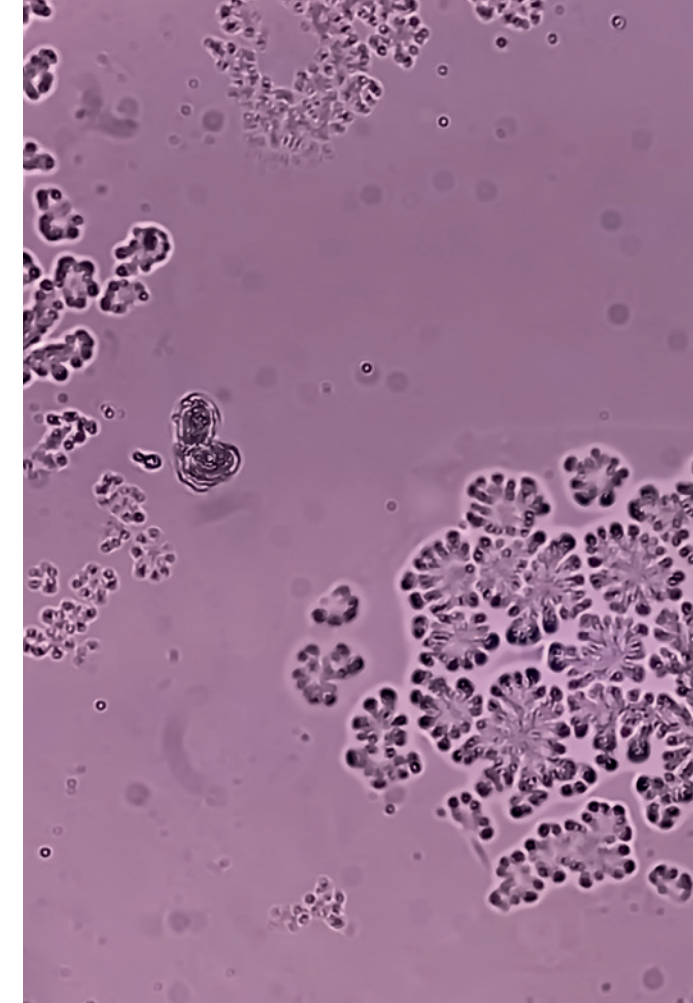
detected several Malassezia molecular allergens as the culprit of Ayleen's chronic skin issues.

MULTIPLEX TEST

enabled the correct diagnosis of Malassezia allergy. ALEX³ is the only test including four Malassezia allergens.

CROSS-REACTIVITY DETECTION

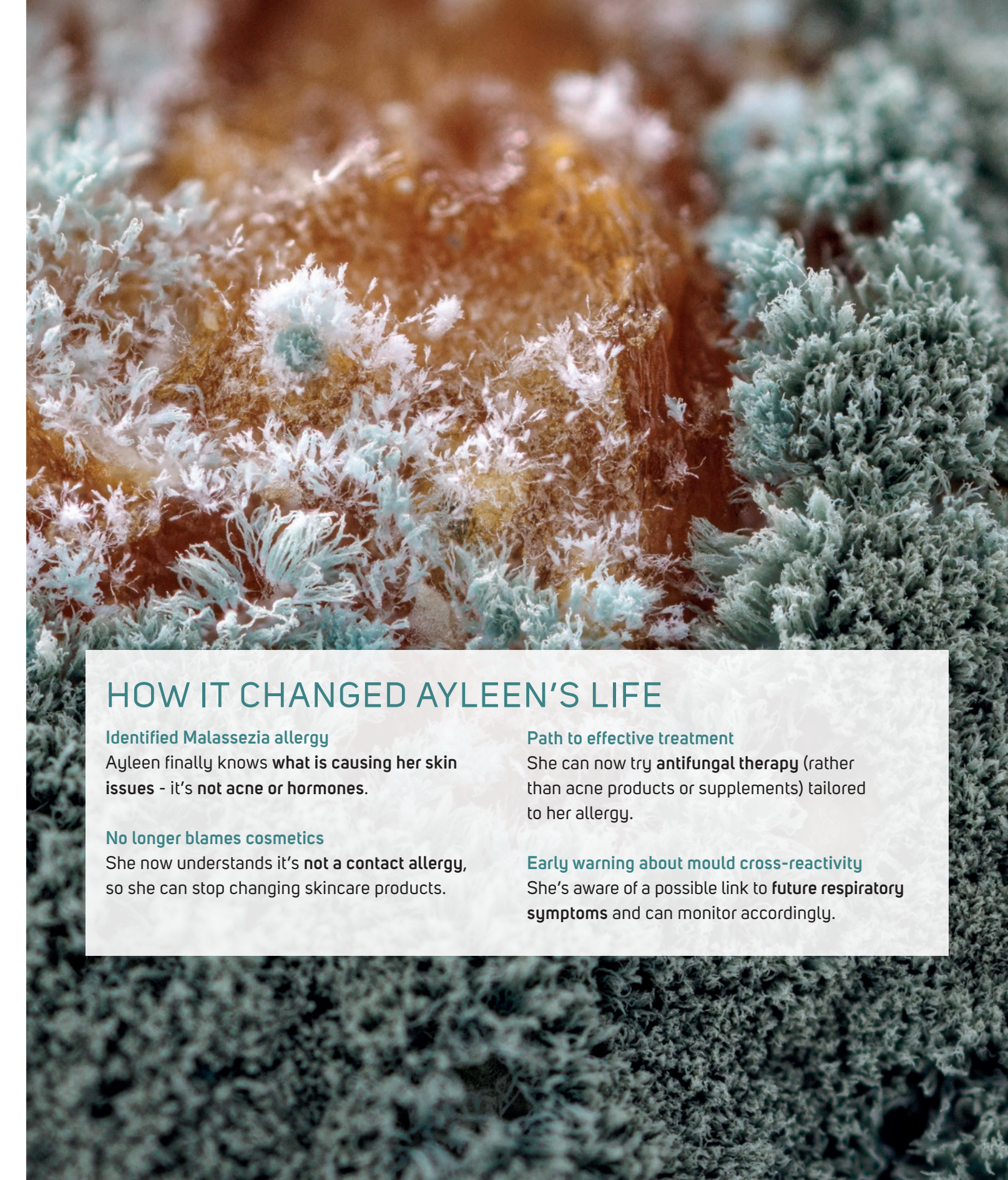
demonstrated a pronounced cross-reactivity with Asp f 6 (mould) and thus highlighted a potential future risk for **respiratory allergies** (e.g., asthma), enabling **early monitoring**.



BENEFITS FOR THE DOCTOR

- Determined sensitisations in one step
- Corrected the misdiagnosis (not hormonal acne)
- Identified a fungal allergy (Malassezia) as the underlying issue
- Could recommend targeted antifungal therapy instead of ineffective dermatological treatments
- Gained insight into possible future risk (mould sensitisation → respiratory care if needed)

COMPREHENSIVE. SPECIFIC. EFFICIENT.



HOW IT CHANGED AYLEEN'S LIFE

Identified Malassezia allergy
Ayleen finally knows what is causing her skin issues - it's not acne or hormones.

No longer blames cosmetics
She now understands it's not a contact allergy, so she can stop changing skincare products.

Path to effective treatment
She can now try antifungal therapy (rather than acne products or supplements) tailored to her allergy.

Early warning about mould cross-reactivity
She's aware of a possible link to future respiratory symptoms and can monitor accordingly.